

E
C
N
A
G
E
L
E

DETACHED VILLAS

LOMAS DE MARBELLA CLUB

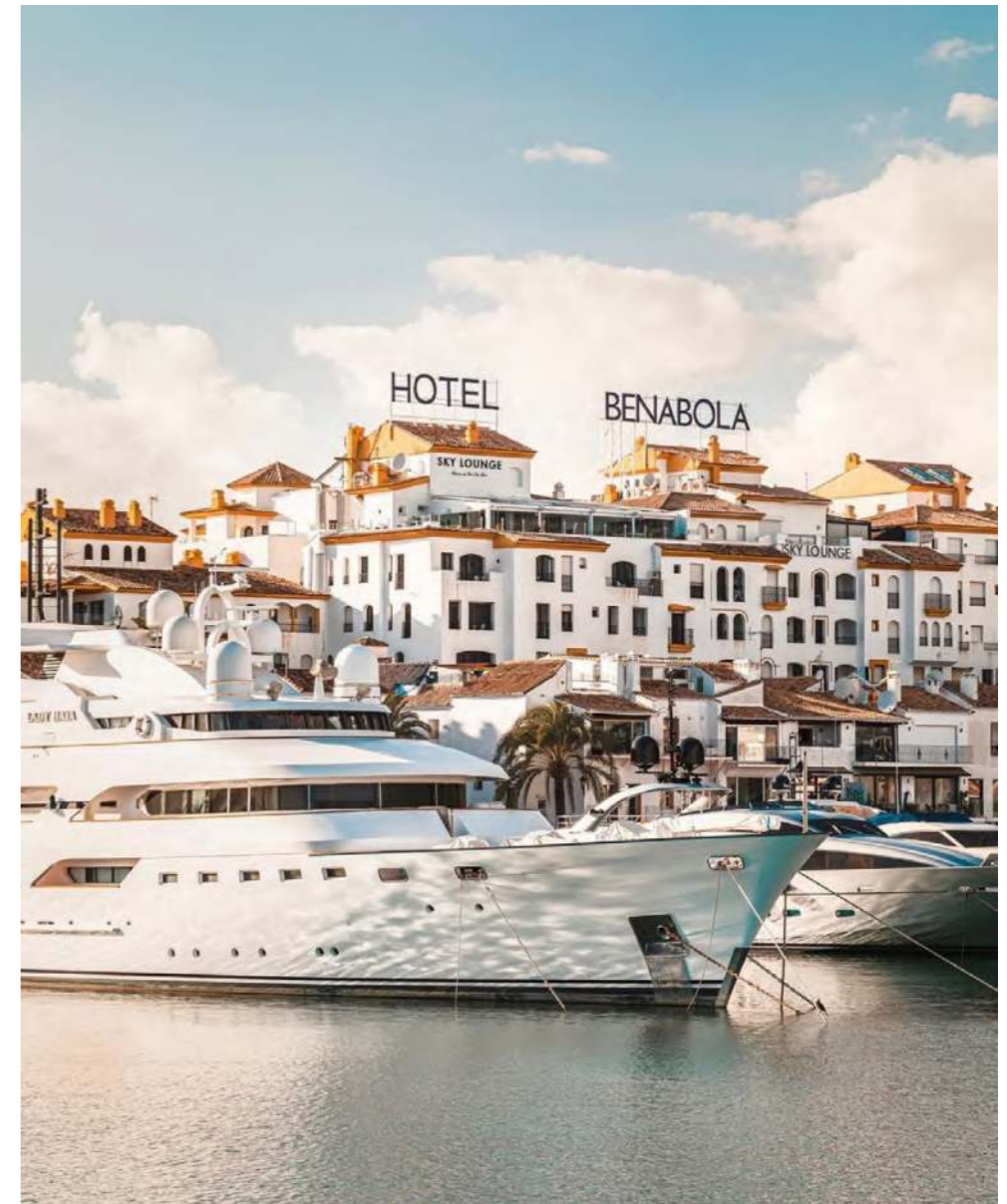
LOCATION

Sophisticated 4 detached villas are located in a prestigious urbanization on the Golden Mile - **Lomas de Marbella Club**.

It is one of the most popular luxury residential areas in Marbella, maintaining its elegant and original appearance, with spacious and perfect green areas, 24 hour security, quality of life and architecture.

The urbanization is located 10 minutes from the center of Marbella, 40 km from Malaga International Airport, 50 km from the AVE station and 85 km from Gibraltar Airport.





Its location north of the Golden Mile, in front of Puente Romano and near the Royal Mosque with its impressive Andalusian Arabic architecture, makes it a privileged area.

This urbanization welcomes all kinds of local and international celebrities, Spanish nobles and European elites, being a very exclusive urbanization with the most expensive villas and mansions in the area.

On the other hand, the urbanization is close to a mythical 5* hotel, Michelin star restaurants, numerous golf courses and international schools, Marbella and Puerto Banús. Wide variety of fashion boutiques, restaurants and nightlife.





DETACHED VILLAS
LOMAS DE MARBELLA CLUB

PUERTO BANÚS

GOLF COURSE
DAMA DE NOCHE

HOTEL
PUENTE ROMANO

HOTEL
MARBELLA CLUB

MARBELLA



DETACHED VILLAS

LOMAS DE MARBELLA CLUB

- 6 BEDROOMS
- 6 BATHROOMS
- 2 TOILETS
- SOLARIUM
- GYM
- LAUNDRY ROOM
- DIRTY KITCHEN
- GARAGE
- SALTWATER SWIMMING POOL
- LARGE TERRACES

VILLA	PLOT	BUILD	TERRACE	PRICE
VILLA 1	1469m ²	615m ²	343m ²	SOLD
VILLA 2	1441m ²	647m ²	284m ²	6.400.000 €

VILLA	PLOT	BUILD	TERRACE	PRICE
VILLA 3	1442m ²	647m ²	284m ²	6.500.000 €
VILLA 4	1528m ²	641m ²	364m ²	SOLD



FOR SALE





INVESTMENT
Villas for Sale







INVESTOR
Plus
2024



Beauty, elegance and comfort characterize these south-facing villas, both classic and modern in appearance, with superior qualities and exceptional materials.

Each villa has an elevated position that, together with its orientation, offers a beautiful view of both the sea and La Concha mountain.



Living room





Kitchen















Bedroom







Bathroom





Terrace



Bedroom







Bedroom



Solarium





Bedroom







Bedroom





Bathroom



Bathroom



















Garage



DETACHED VILLAS

LOMAS DE MARBELLA CLUB

BASEMENT FLOOR

NAME	BUILT
1 Garage	74.60 m ²
2 Hall/Corridor	19.50 m ²
3 Bedroom 1	26.90 m ²
4 Bathroom 1	7.90 m ²
5 Bedroom 2	29.00 m ²
6 Bathroom 2	8.70 m ²
7 Corridor	6.40 m ²
8 Laundry	22.00 m ²
9 Staff kitchen	12.00 m ²
10 Living room/Bedroom	21.70 m ²
11 Wardrobe	2.20 m ²
12 Bathroom 3	3.60 m ²
13 Technical Room	18.30 m ²
BASEMENT FLOOR TOTAL AREA	252.80 m²
TOTAL HOUSE AREA	528.00 m²

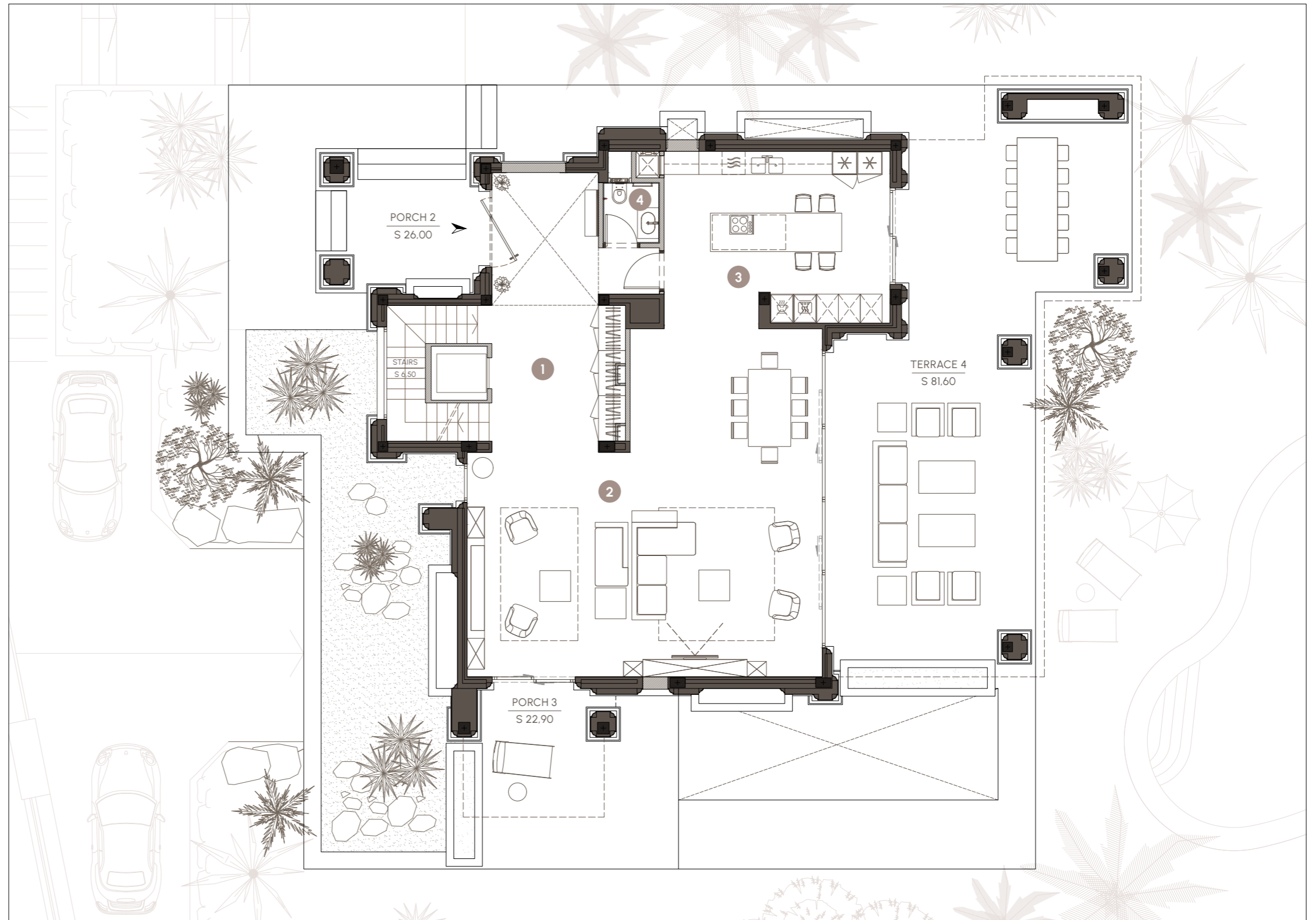


DETACHED VILLAS

LOMAS DE MARBELLA CLUB

GROUND FLOOR

NAME	BUILT
1 Hall/Corridor	24.80 m ²
2 Living room	69.50 m ²
3 Kitchen	26.20 m ²
4 WC 1	2.30 m ²
GROUND FLOOR TOTAL AREA	122.80 m²
TOTAL HOUSE AREA	528.00 m²

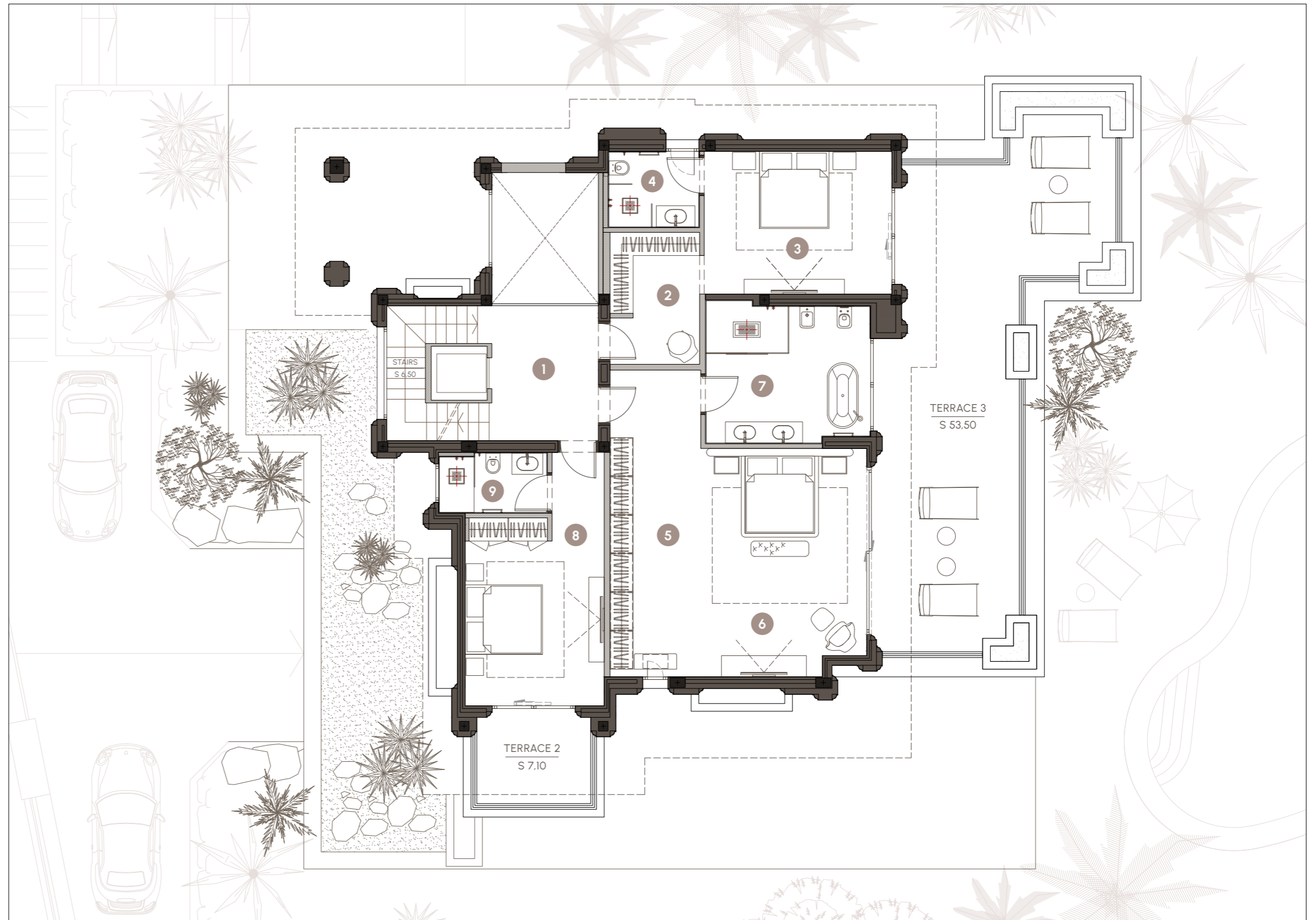


DETACHED VILLAS

LOMAS DE MARBELLA CLUB

FIRST FLOOR

NAME	BUILT
1 Vestibule	10.10 m ²
2 Dressing 1	8.20 m ²
3 Bedroom 3	18.00 m ²
4 Bathroom 4	4.70 m ²
5 Master dressing	18.70 m ²
6 Master bedroom	24.70 m ²
7 Master bathroom	15.10 m ²
8 Bedroom 4	19.70 m ²
9 Bathroom 5	4.50 m ²
FIRST FLOOR TOTAL AREA	123.70 m²
TOTAL HOUSE AREA	528.00 m²

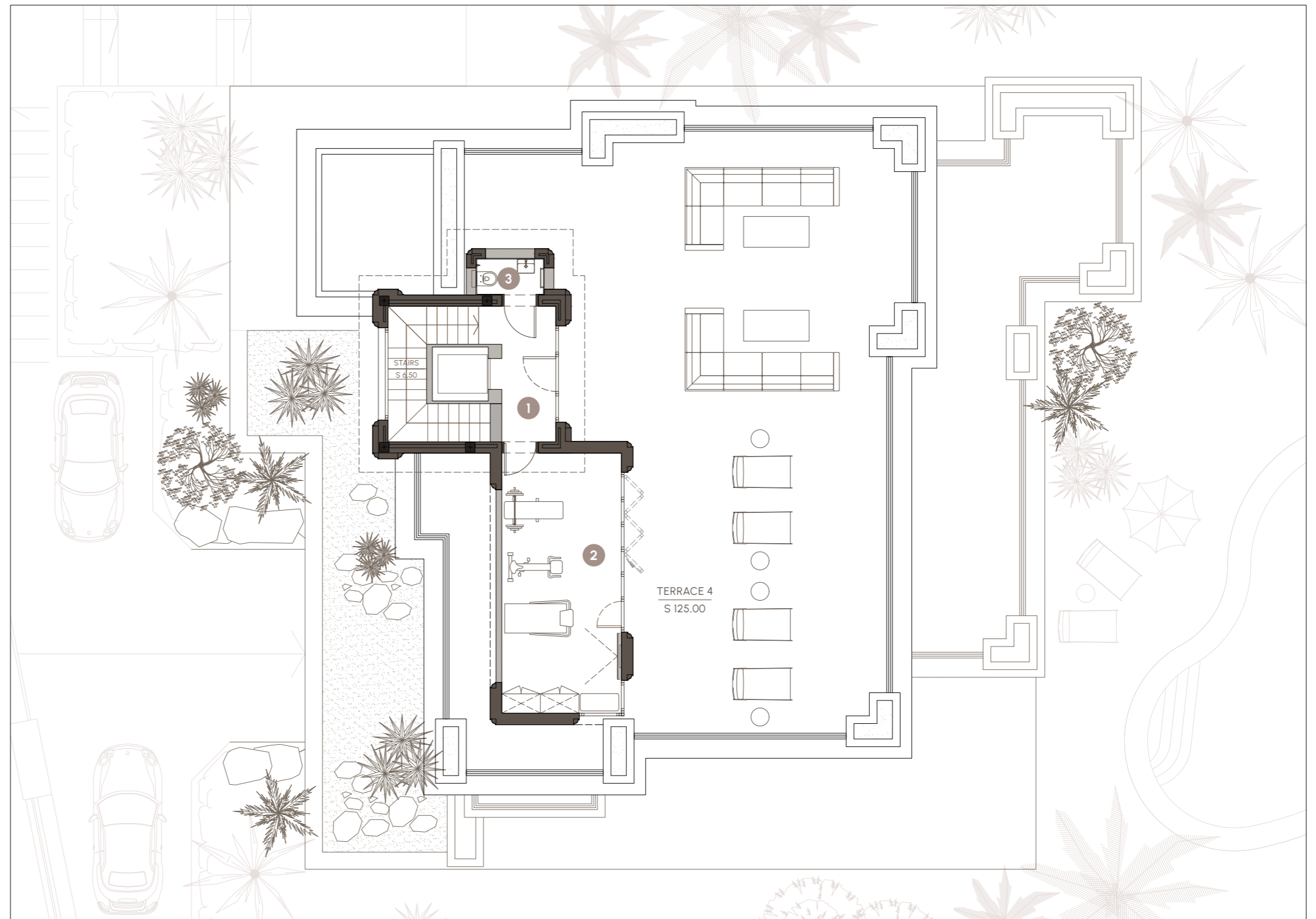


DETACHED VILLAS

LOMAS DE MARBELLA CLUB

ROOF TERRACE

NAME	BUILT
1 Hall	6.10 m ²
2 GYM	20.90 m ²
3 WC 2	1.70 m ²
ROOF TERRACE TOTAL AREA	28.70 m²
TOTAL HOUSE AREA	528,00 m²



DETACHED VILLAS

LOMAS DE MARBELLA CLUB