



PERNET  
VILLAS

DISCOVER  
PERNET VILLAS





---

## LOCATION

---

*Perfectly positioned between Estepona and San Pedro de Alcántara, near the prestigious Guadalmina urbanization, Pernet Villas located in Monte Biarriz is a sanctuary of refined living in the heart of the Costa del Sol.*

*Designed with timeless elegance and a deep respect for its natural surroundings, these villas showcase impeccable architecture that blends seamlessly into the landscape.*

*Enjoy the tranquility of El Campanario while remaining just minutes from the vibrant energy of Marbella and Puerto Banús. Surrounded by world-class golf courses and close to the pristine beaches of Casasola and Atalaya, the location strikes the perfect balance between nature, leisure, and sophistication.*

*From upscale beach clubs and fine dining to effortless access to both Málaga and Gibraltar airports (under 50 minutes away), every element of an elevated Mediterranean lifestyle is within easy reach.*



---

## EXTERIORS

---

*The vision behind Pernet Villas is to create a seamless harmony between design, functionality, and sustainability. Each garden is conceived as a tranquil sanctuary, thoughtfully landscaped with native plants that reflect our commitment to the environment.*

*Crowning each villa, the rooftop terrace is a flexible, elevated living space ideal as a serene chill-out lounge or a stylish outdoor kitchen for unforgettable gatherings with family and friends.*







---

# ARCHITECTURE IN HARMONY WITH NATURE

---

*Thoughtfully Crafted Homes Embraced by Nature's Calm*



---

# PRIVATE ROOFTOP

---

*Crafted for moments that matter*







VILLA 1



---

## INTERIOR

---

*Flooded with Mediterranean light throughout the year, Pernet Villas seamlessly blend interior elegance with the beauty of the outdoors through vast floor to ceiling sliding doors.*



---

## KITCHEN

---

*Enhanced by a sophisticated modern kitchen featuring a spacious island and seamless integration between outdoor and indoor living spaces.*

---

## MASTER SUITE

---

*Upstairs, the bedrooms are designed for comfort and ease, featuring floor to ceiling windows that welcome natural light and offer breathtaking views.*







---

## JUNIOR SUITE

---

*Spacious, bright, and refined. A large floor-to-ceiling sliding door connects the interior with the outdoors, filling the space with natural light and offering a truly relaxing experience.*



---

## COZY RETREAT

---

*Soft, calming colors and carefully selected furnishings enhance the tranquil ambiance, while thoughtful details like plush bedding and spacious storage ensure both comfort and practicality.*



---

## MASTER BATHROOM

---

*The master retreat offers a sophisticated en-suite bath adorned with high-end finishes and a spacious rainfall shower for a spa-like experience.*

---

# BASEMENT

---

*Carefully planned for comfort and concentration, the sunlit basement office provides a quiet haven perfect for working, thinking, or creating.*



---

## WELLNESS & LEISURE

---

*Designed for energy and balance, this level offers the possibility of a bright, modern game room and space that can be customized for a gym or other recreational use. Floor-to-ceiling windows fill the area with natural light and views of a landscaped patio, creating a perfect spot to train or unwind in a calm setting.*







VILLA 2



---

## INTERIOR

---

*Flooded with Mediterranean light throughout the year, Pernet Villas seamlessly blend interior elegance with the beauty of the outdoors through vast floor to ceiling sliding doors.*



---

## KITCHEN

---

*Enhanced by a sophisticated modern kitchen featuring a spacious island and seamless integration between outdoor and indoor living spaces.*







---

## MASTER SUITE

---

*Upstairs, the bedrooms are designed for comfort and ease, featuring floor to ceiling windows that welcome natural light and offer breathtaking views.*





---

## MASTER BATHROOM

---

*The master retreat offers a sophisticated en-suite bath adorned with high-end finishes and a spacious rainfall shower for a spa-like experience.*





---

# BASEMENT

---

*Carefully planned for comfort and concentration, the sunlit basement office provides a quiet haven perfect for working, thinking, or creating.*







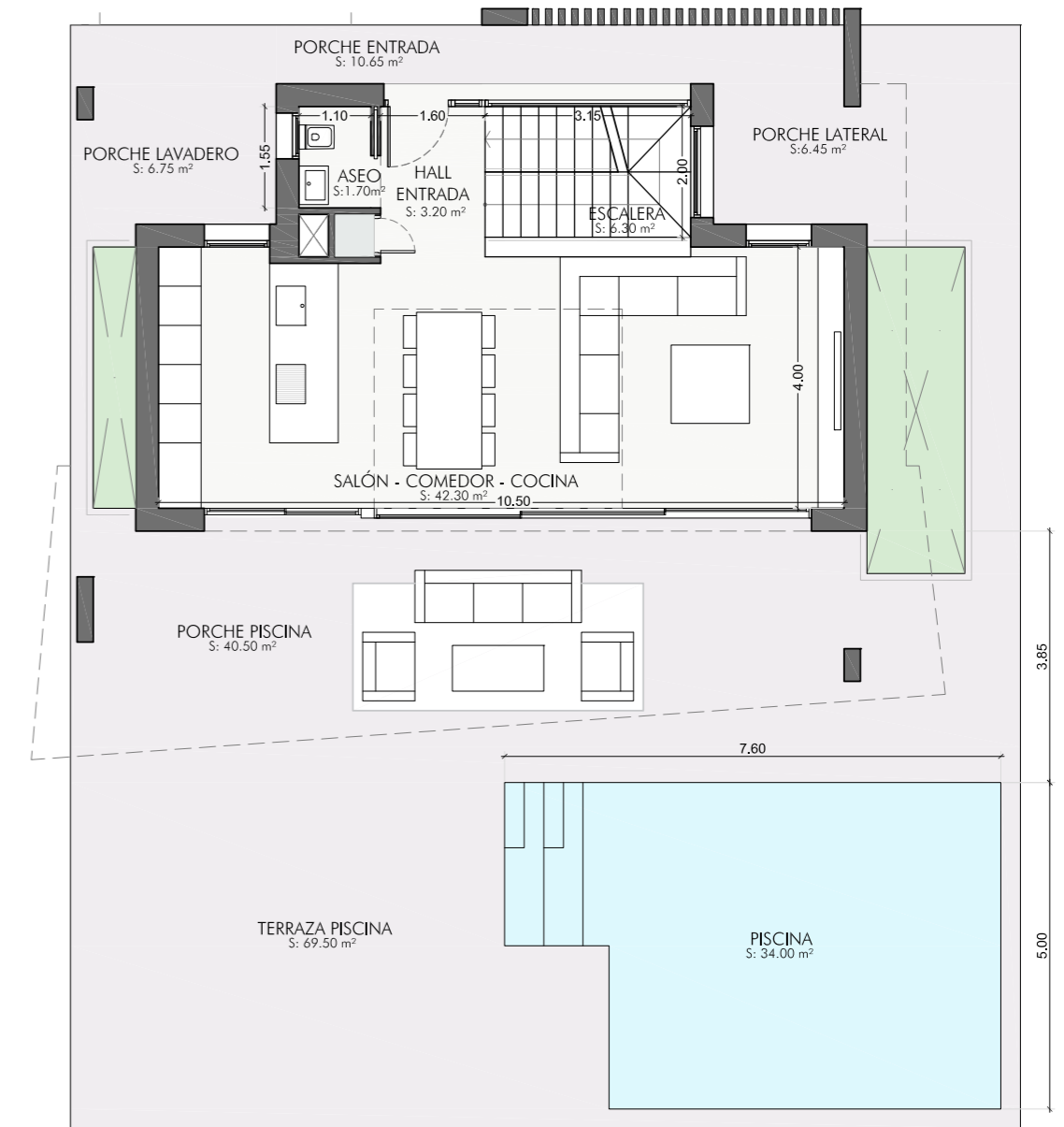
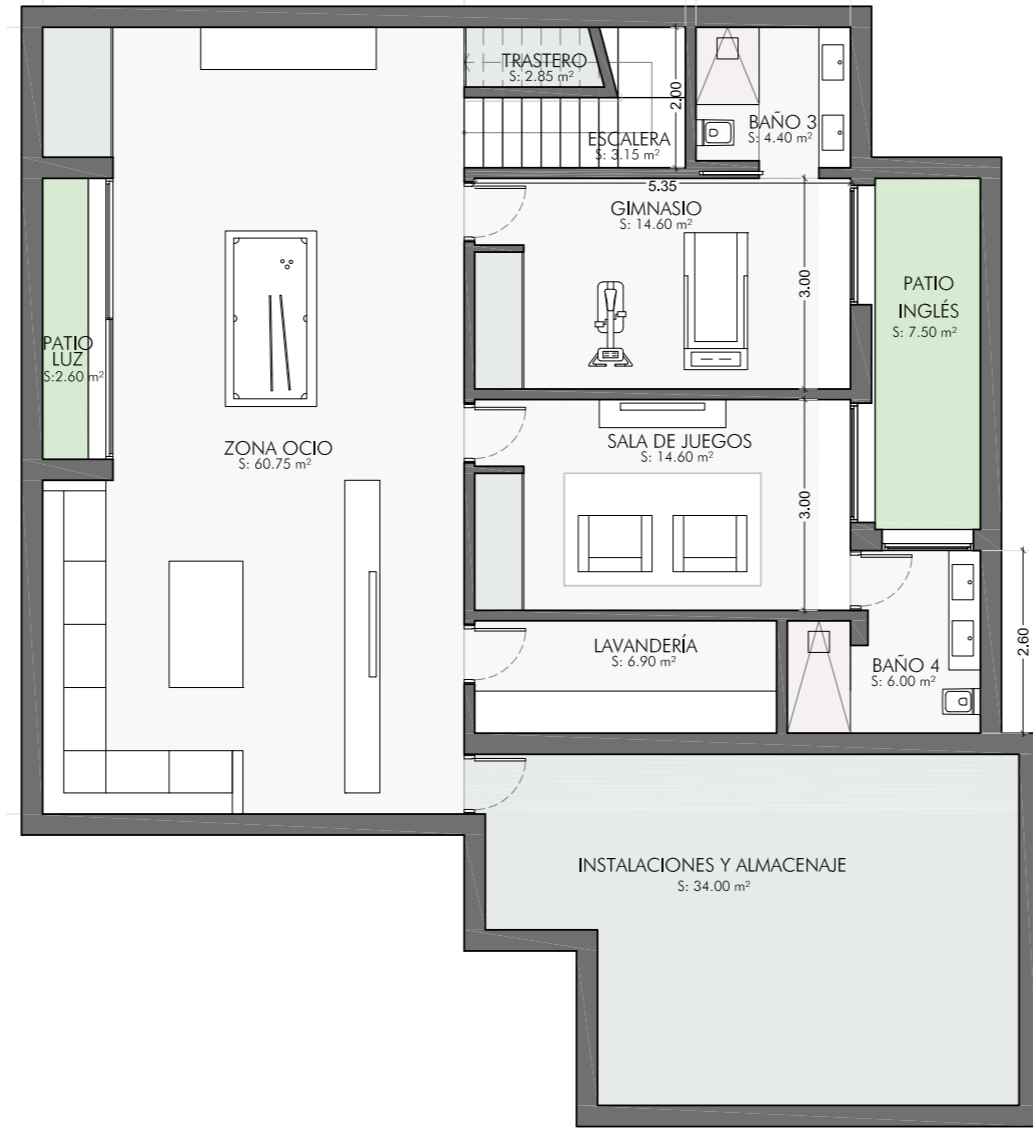
# FLOORPLANS

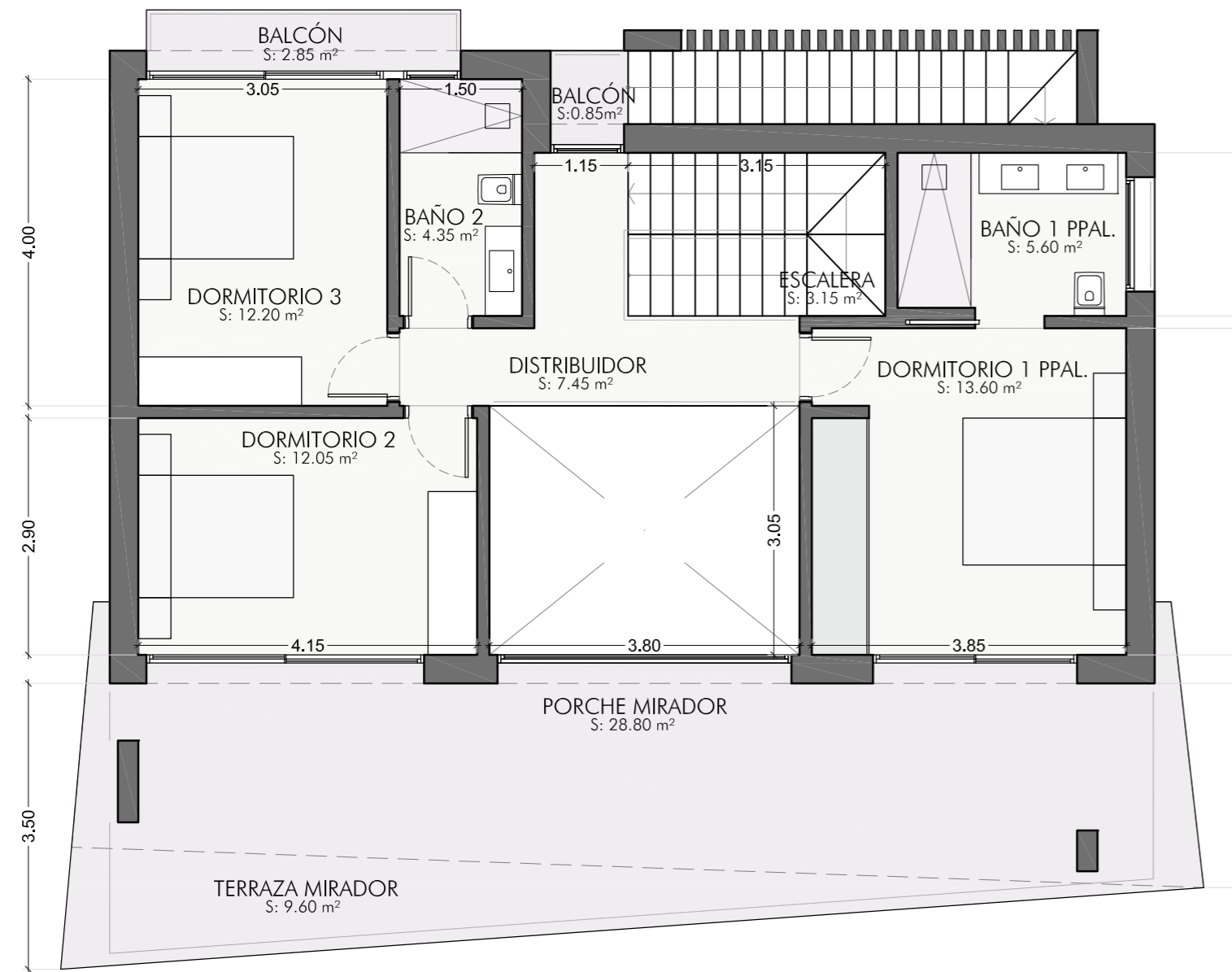


PERNET  
VILLAS

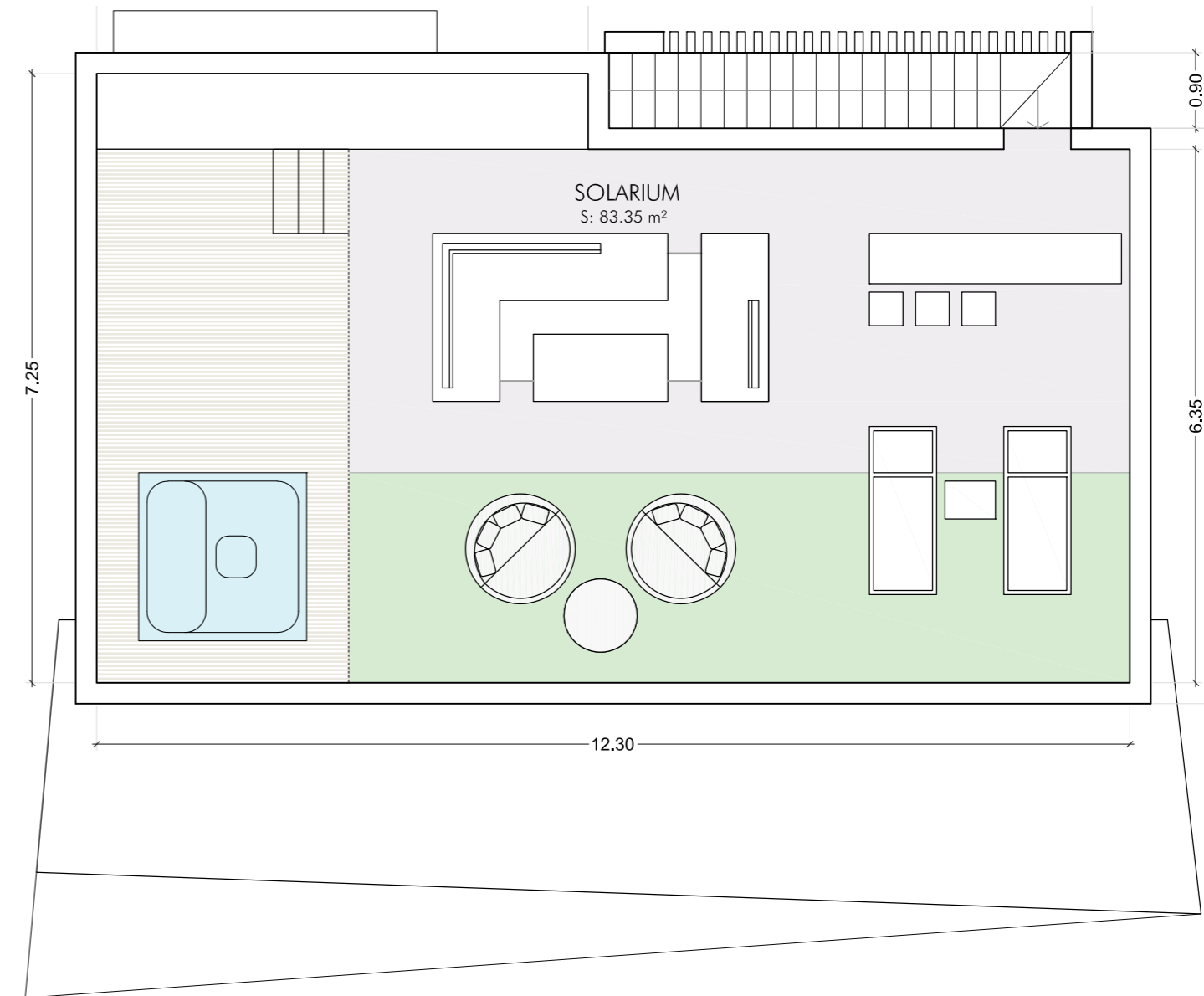
VILLA 1

PLOT	555,89 m <sup>2</sup>
Garden Area	206,65 m <sup>2</sup>
AREAS	
Enclosed Built Area	329,84 m <sup>2</sup>
Covered Terrace Area	94,00 m <sup>2</sup>
Uncovered Terrace Area	175,40 m <sup>2</sup>
TOTAL BUILT AREA	
Total Built Area	599,24 m <sup>2</sup>





Planta Primera



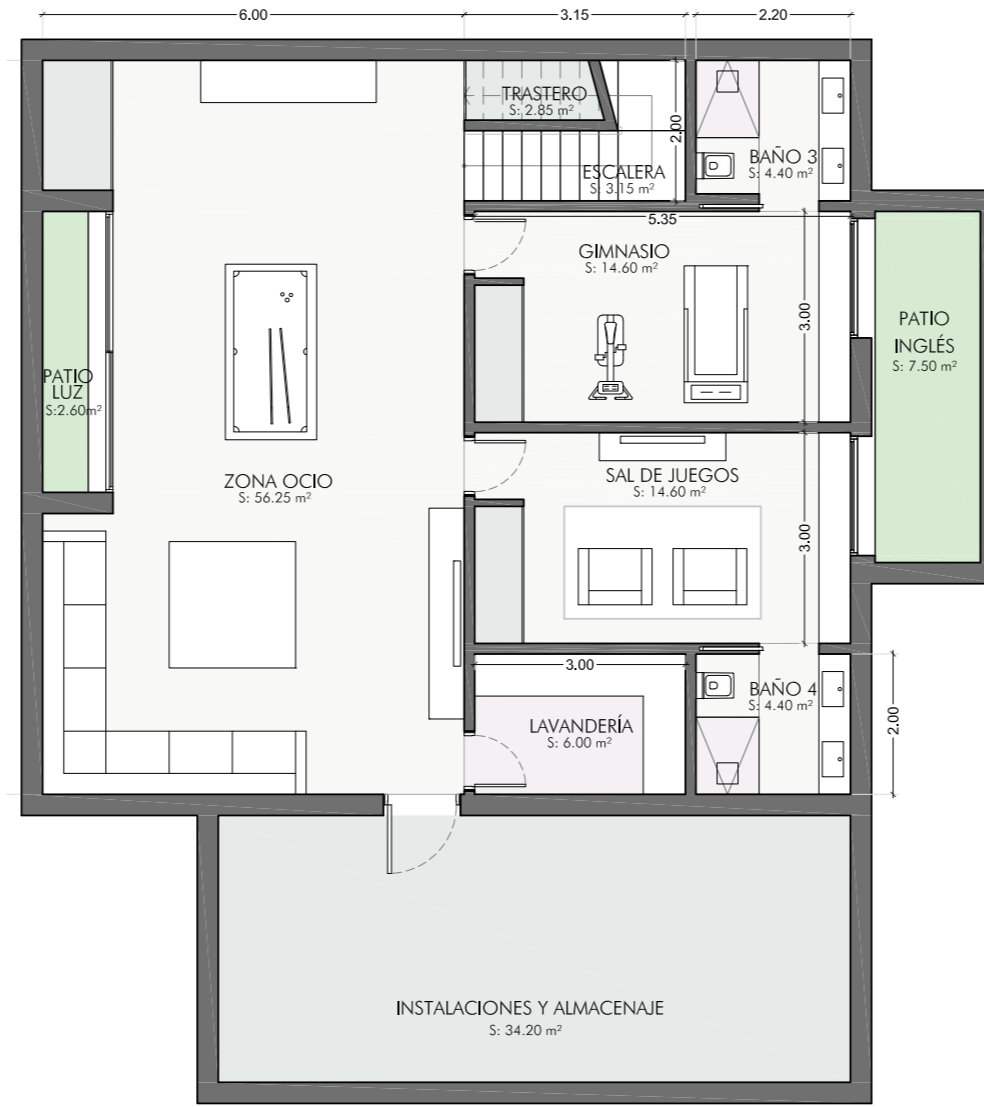
Planta Solarium



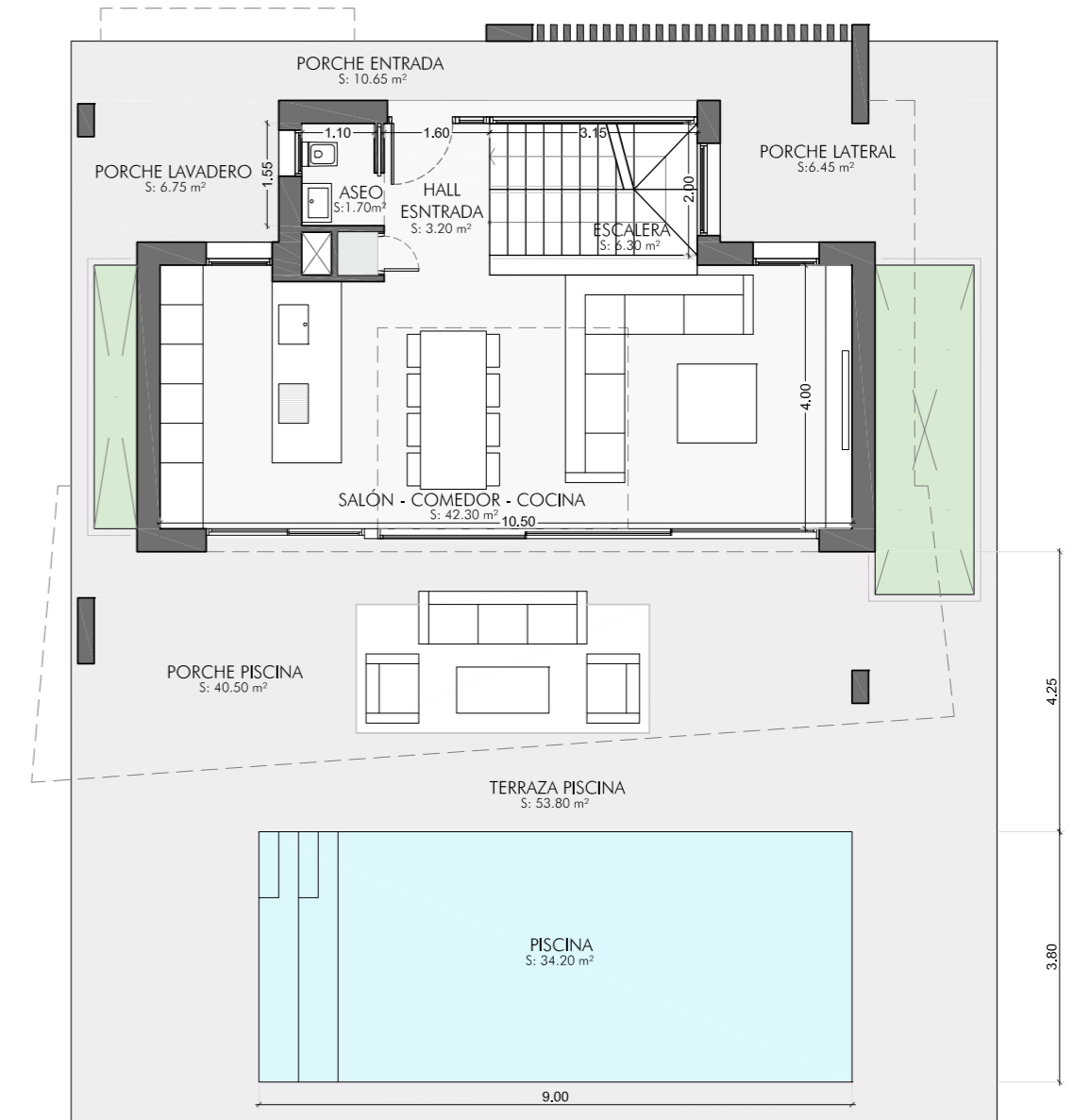
PERNET  
VILLAS

VILLA 2

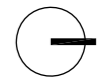
PLOT	555,89 m <sup>2</sup>
Garden Area	212,85 m <sup>2</sup>
AREAS	
Enclosed Built Area	321,07 m <sup>2</sup>
Covered Terrace Area	94,00 m <sup>2</sup>
Uncovered Terrace Area	160,60 m <sup>2</sup>
TOTAL BUILT AREA	
Total Built Area	575,67 m <sup>2</sup>

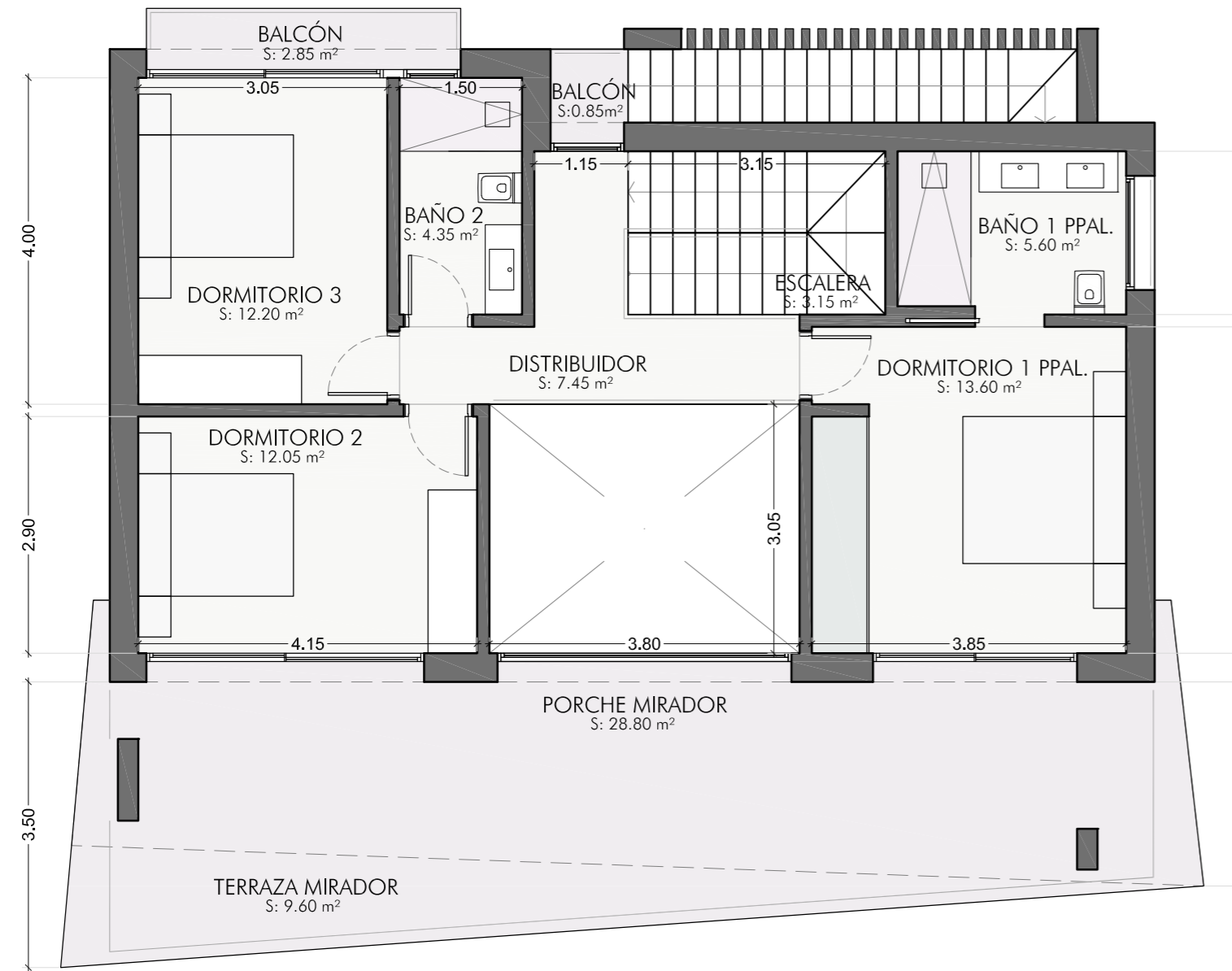


Planta Sótano

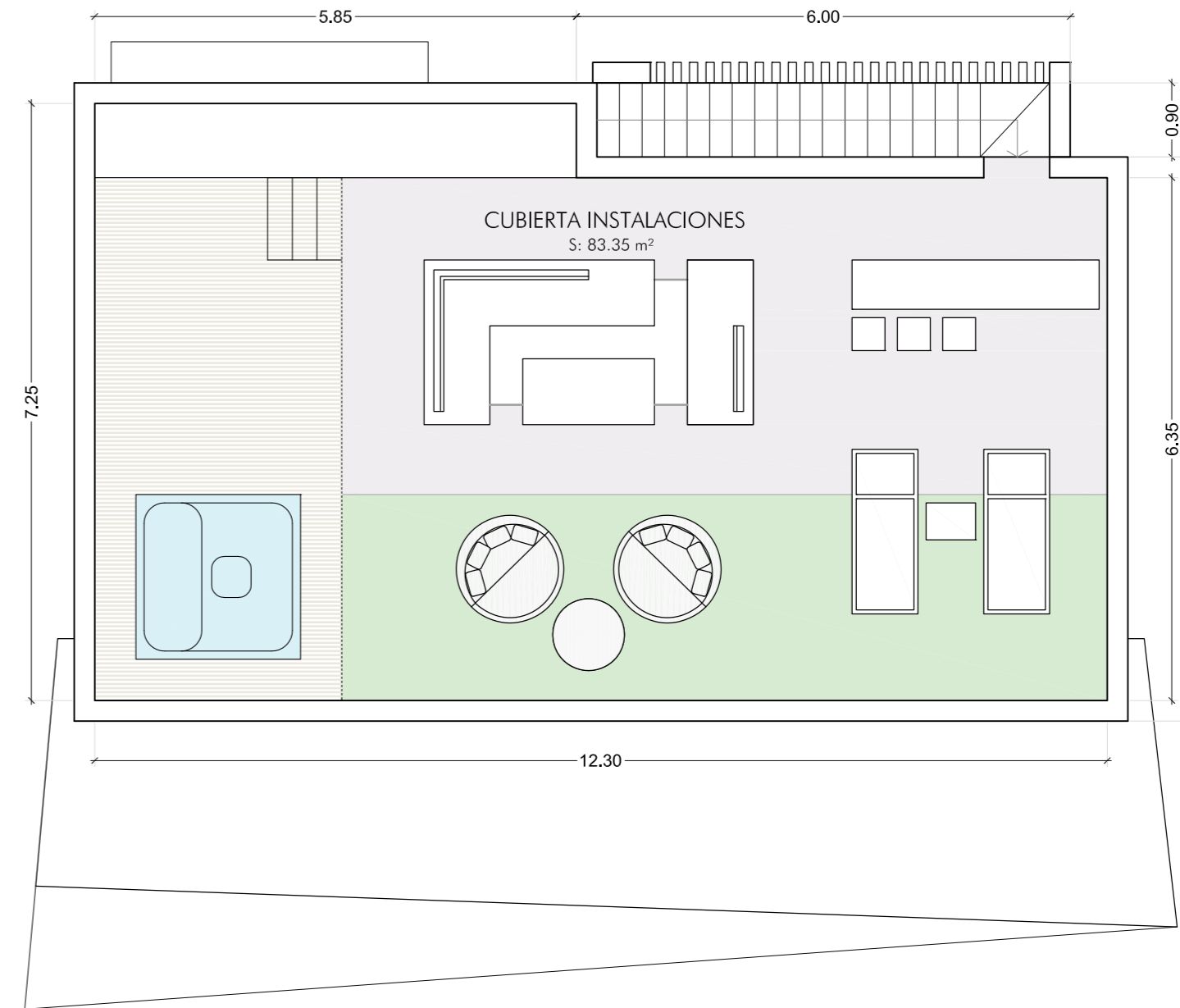


Planta Baja





Planta Primera



Planta Solarium



PERNET  
VILLAS