

Aloha Forest

VASARI APARTMENTS





ELEGANCE IN TOUCH WITH NATURE

“This exclusive new residential development, situated adjacent to Marbella’s renowned Golden Mile, comprises 40 high-end apartments and premium penthouses, all featuring luxury amenities and offering breathtaking views of both the Mediterranean Sea and the surrounding mountains. Characterized by open layouts, refined finishes, and complete privacy, the project has been designed by the prestigious Tortosa Architects and is being developed in two distinct phases by Vasari, one of Marbella’s most esteemed developers. The interiors are conceived by the renowned design studio La Albaida.”



NATURE OUTSIDE AND PERFECTION INSIDE

IN THE HEART OF MARBELLA

PHASE I

af

PHASE II



DISCOVER THE HEART OF MARBELLA



AN EXCEPTIONAL ENVIRONMENT, WAITING TO BE EXPLORED AND ENJOYED

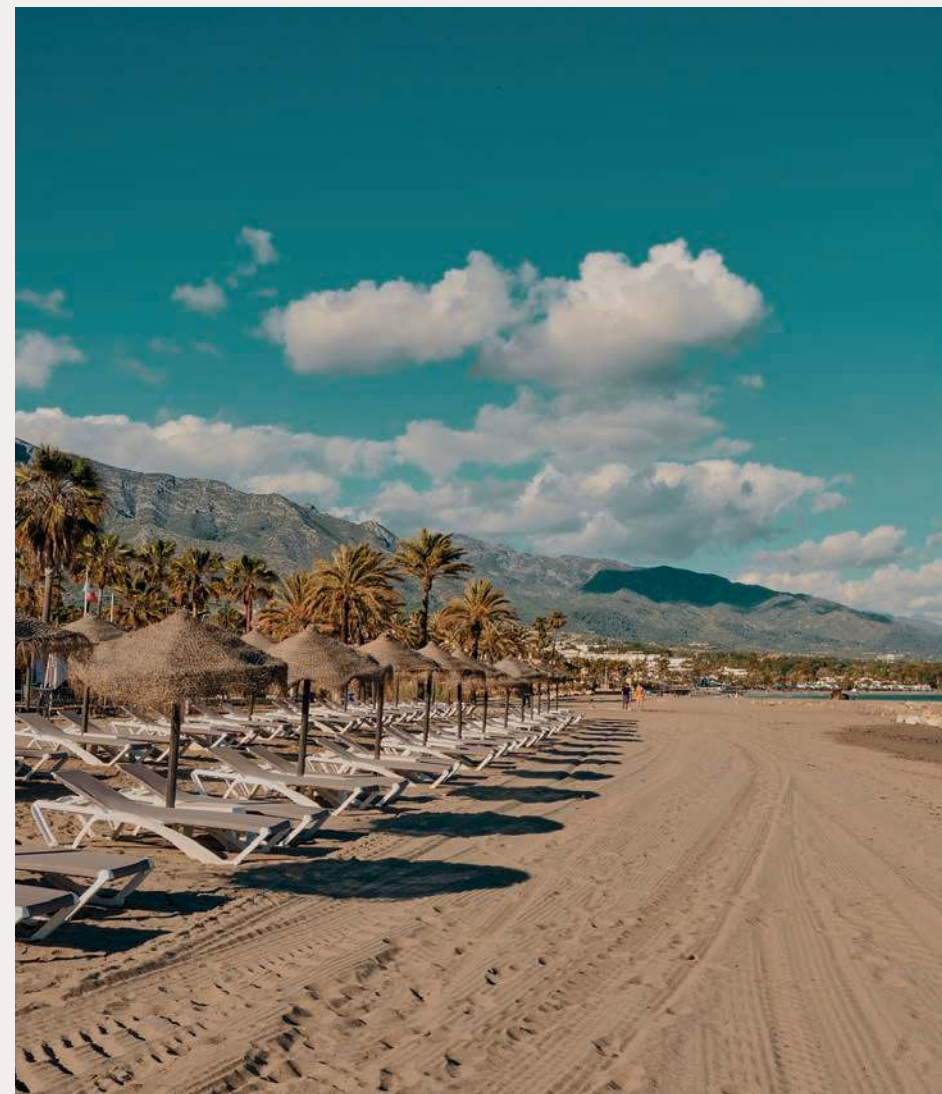
Experience Marbella at its finest. Enjoy year-round sunshine, pristine beaches, and the unmatched luxury of the Golden Mile, just steps from our project. A place where elegance, sophistication, and Mediterranean charm come together."

 BEST BEACH CLUBS IN THE COSTA  BEST GASTRONOMIC OFFER  CULTURAL GETAWAYS (+30 MUSEUMS)

DIVERSE OPTIONS TO SUIT YOUR LIFESTYLE

Discover Aloha, the jewel of Marbella's Golf Valley. This exclusive and picturesque community combines luxury, tranquillity, and convenience in a way few places can. Perfectly positioned within walking distance of world-class golf courses -Aloha, Las Brisas, and Los Naranjos-, the prestigious Aloha College International School, the vibrant Puerto Banús Marina, and iconic luxury resorts such as Puente Romano and Marbella Club, Aloha offers everything at your doorstep.

 + 60 GOLF COURSES IN COSTA DEL SOL  OUTDOOR EXCURSIONS  +30 TENNIS & PADDLE TENNIS FACILITIES



AN EXCEPTIONAL LOCATION



🏌️ ⬅️ **1 min.** ALOHA GOLF

🏨 ⬅️ **5 min.** PUENTE ROMANO HOTEL

🛍️ ↓ **5 min.** SHOOPING AREAS

📍 → **10 min.** MARBELLA CITY

🎓 ⬅️ **1 min.** INTERNATIONAL SCHOOL

🏌️ ⬅️ **5 min.** LAS BRISAS GOLF

🏖️ → **5 min.** BEACH

📍 → **15 min.** ESTEPONA CITY

🚗 ⬅️ **5 min.** PUERTO BANÚS

🏥 ⬅️ **5 min.** HOSPITALS AND MEDICAL HELIPORT

🍴 → **5 min.** RESTAURANTS AND LEISURE AREAS

✈️ → **40 min.** MALAGA INTERNATIONAL AIRPORT

GENERAL PLAN



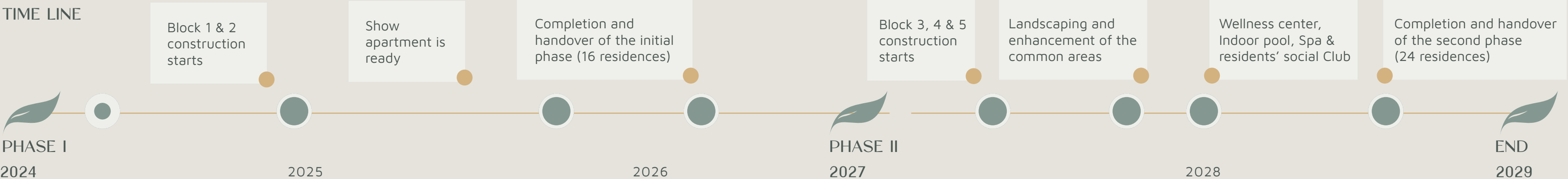
AN ARCHITECTURAL PROJECT WITH A VISIONARY APPROACH

MASTER PLAN

Experience a residential development of 40 high-end apartments with incredible mountain and sea views, where visionary design, harmonious proportions, and innovative architecture create an inspiring living environment with a seamless transition from outdoor to indoor spaces.



TIME LINE



LUXURY LIVING IN HARMONY
WITH NATURE





Bespoke cabinetry and floor-to-ceiling windows

Rich natural stone and wood finishes



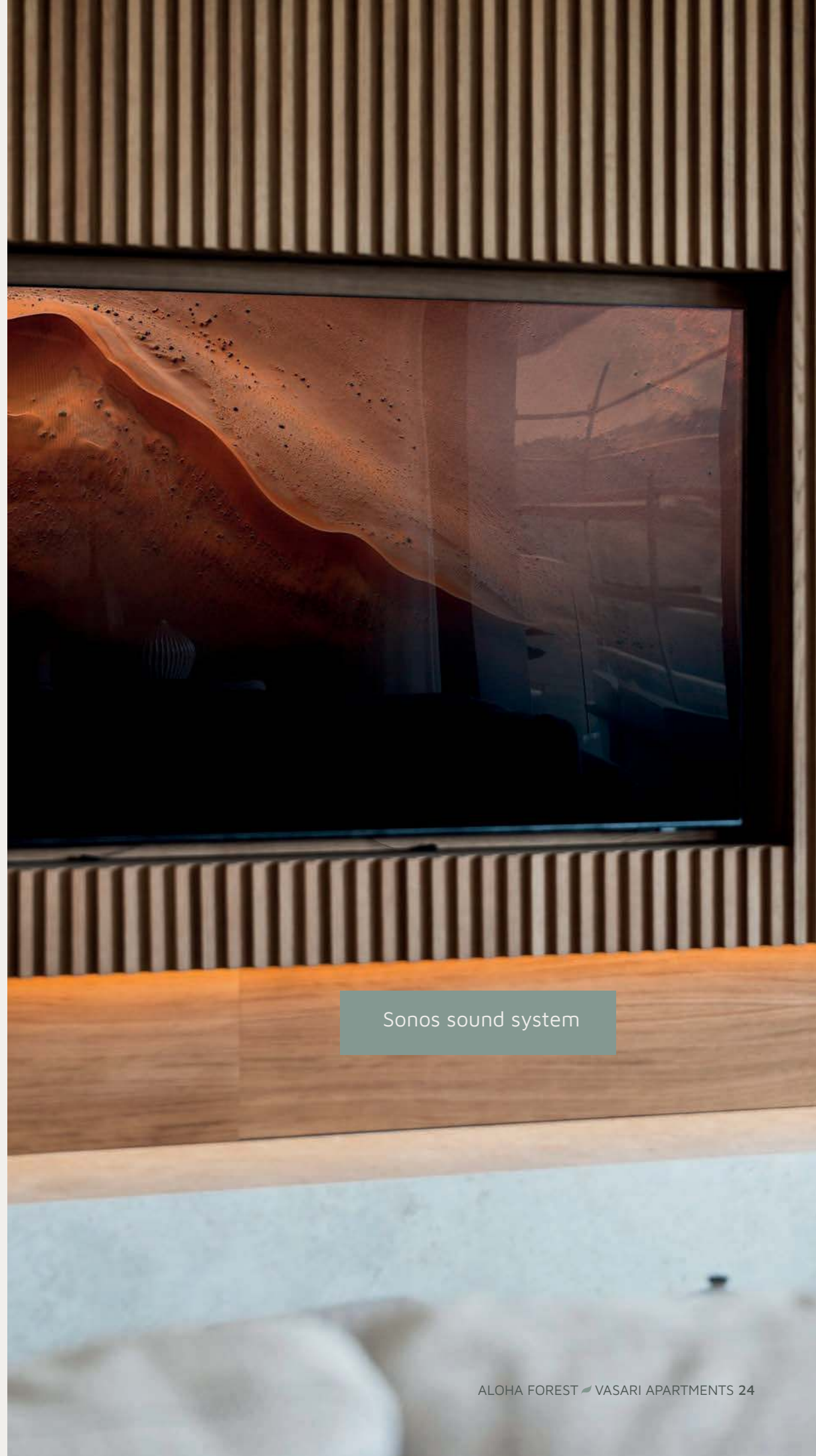
Designer kitchens with Miele appliances





Apple Home automation system

Aerothermal air conditioning and underfloor heating



Sonos sound system



Bathrooms featuring premium Italian fittings

OUTDOORS



Spacious private terraces with breathtaking natural views





A TIMELESS RETREAT OF LUXURY AND COMFORT

Five-star amenities ensure a seamless living experience, encompassing world-class wellness facilities, exclusive private lounges, and family-friendly spaces. **Aloha Forest** is not merely a residence; it is a sanctuary crafted for those who wish to recharge, reconnect, and transcend the ordinary.



SOCIAL CLUB
LOUNGE



SPA &
WELLNESS



OUTDOOR &
INDOOR POOLS



HI-TECH
GYM



COWORKING
SPACE



RELAXATION
AREAS



OUTDOOR POOLS
MEDITERRANEAN GARDENS



Enjoy year-round leisure with stunning indoor and outdoor pools, designed for relaxation and elegance

A SANCTUARY FOR THE SENSES



WELLNESS & SPA



HI-TECH GYM



A sophisticated space designed for high-performance training, wellness, and total well-being

SOCIAL CLUB LOUNGE



COWORKING SPACES

An exclusive space for networking, innovation, and professional growth within the residence

The social club Lounge offers an exclusive space to unwind, socialize, and enjoy refined comfort in a luxurious setting



RELAXATION AREAS

Relax in beautifully appointed chill-out areas crafted for wellness and tranquility

EXPLORE THE COLLECTION



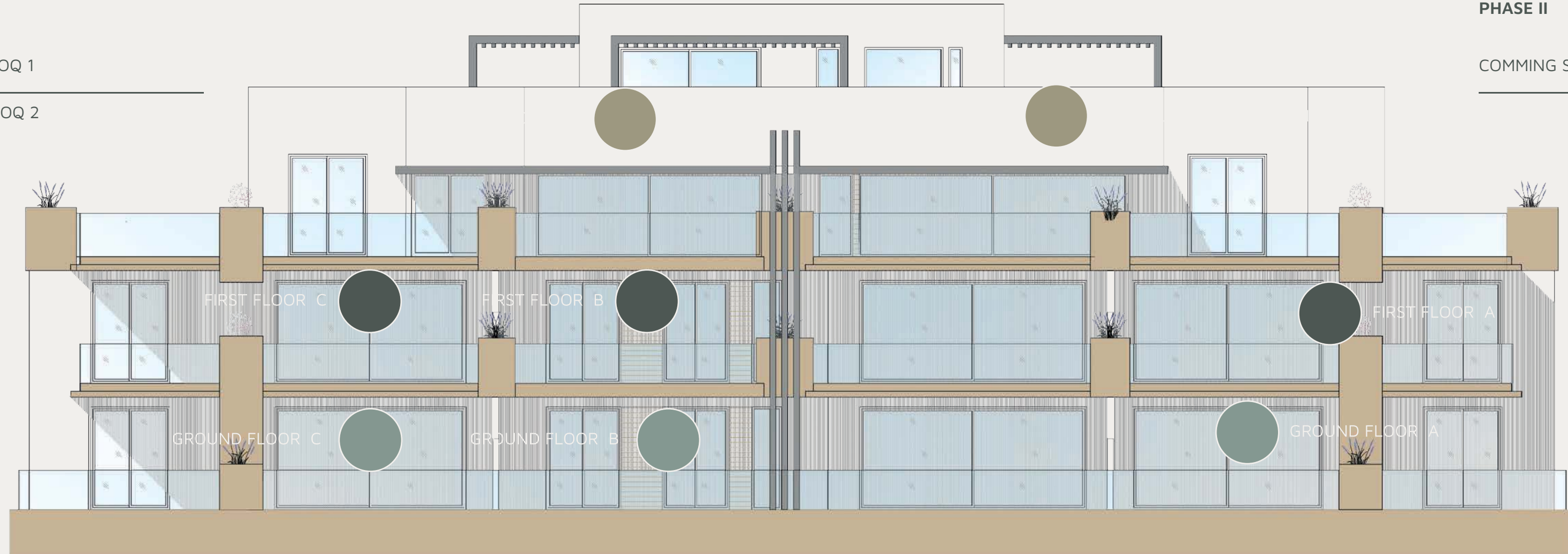
PHASE I

PALM TREE | BLOQ 1

OLIVE TREE | BLOQ 2

PHASE II

COMING SOON





BLOQ 2 (OLIVE TREE) | GROUND FLOOR A

Aloha Forest

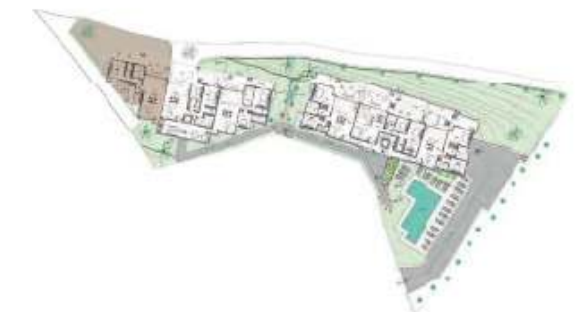
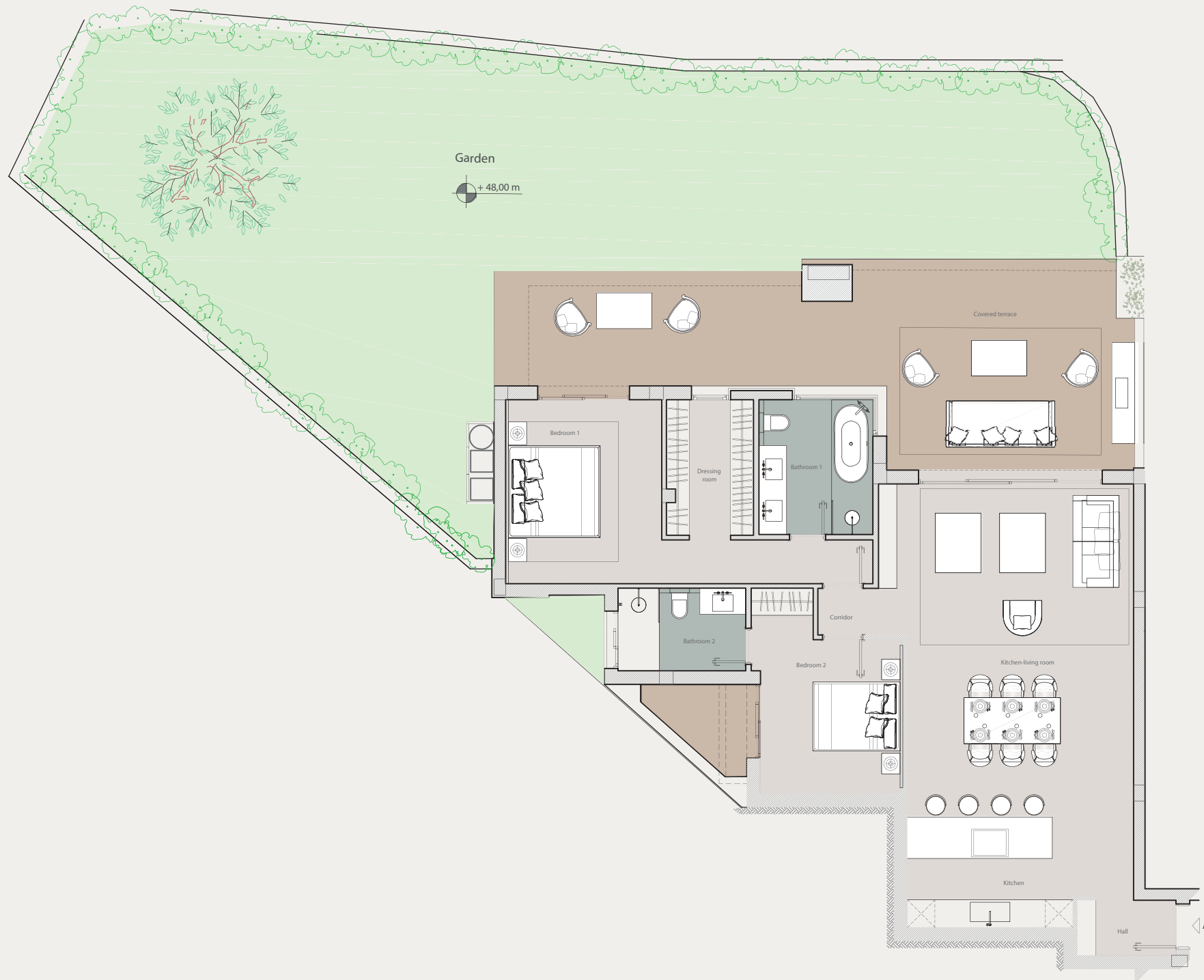
VASARI APARTMENTS

USEFUL AREAS

HALL	2,58 M ²
KITCHEN-LIVING ROOM	48,91 M ²
BEDROOM 1	17,99 M ²
BEDROOM 2	12,03 M ²
CORRIDOR	1,34 M ²
BATHROOM 1	7,27 M ²
BATHROOM 2	4,99 M ²
DRESSING ROOM	5,55 M ²
COVERED TERRACE	41,77 M ²
GARDEN	129,94 M ²

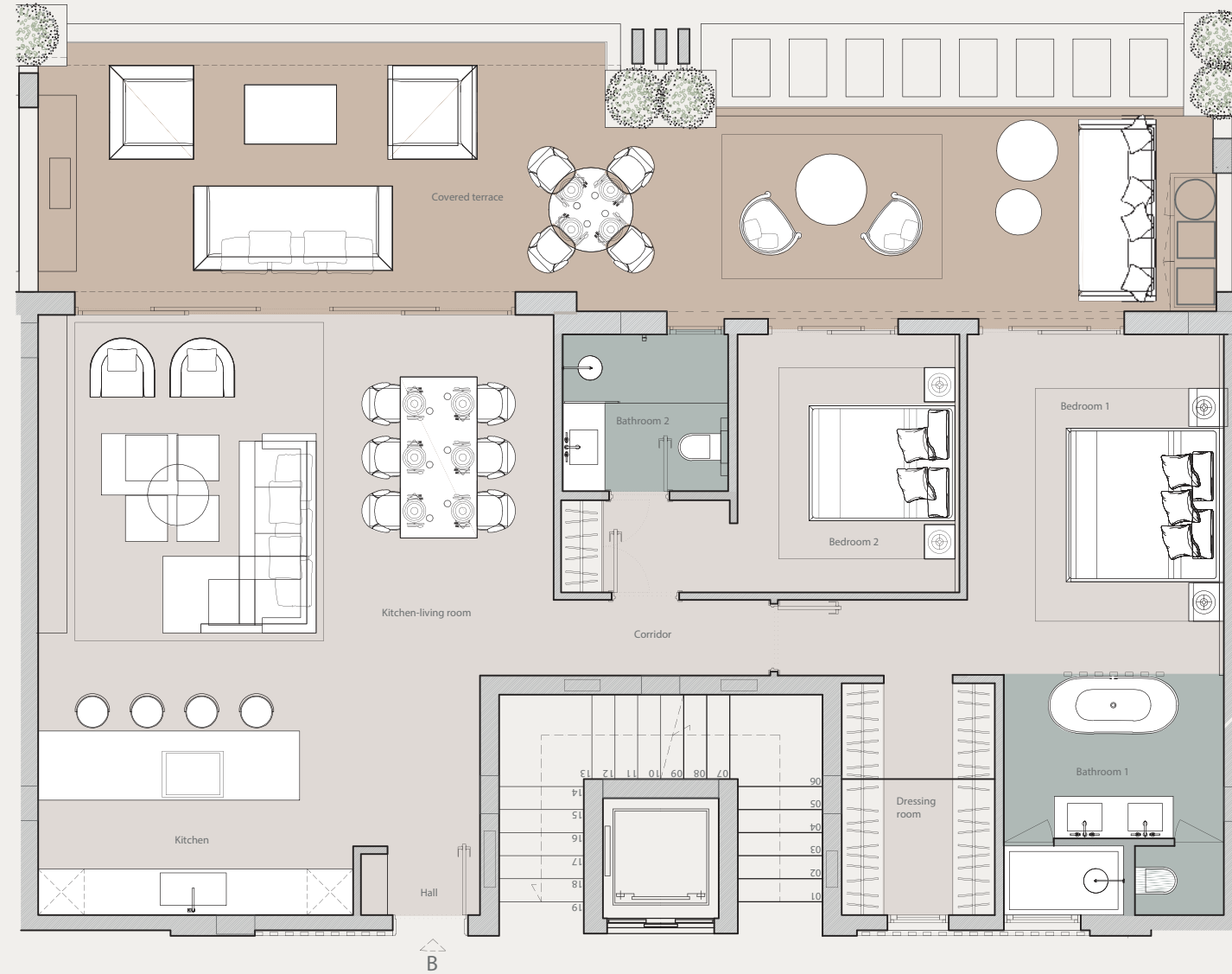
SUMMARY OF SURFACES

USEFUL INTERIOR SURFACE AREA	100,66 M ²
USEFUL EXTERIOR SURFACE AREA	41,77 M ²
TOTAL USEFUL AREA	142,43 M ²
INTERIOR CONSTRUCTED SURFACE AREA	118,40 M ²
OUTDOOR CONSTRUCTED SURFACE AREA	175,55 M ²
TOTAL BUILT-UP AREA	293,95 M²





BLOQ 1 (PALM TREE) | FIRST FLOOR B



Aloha Forest

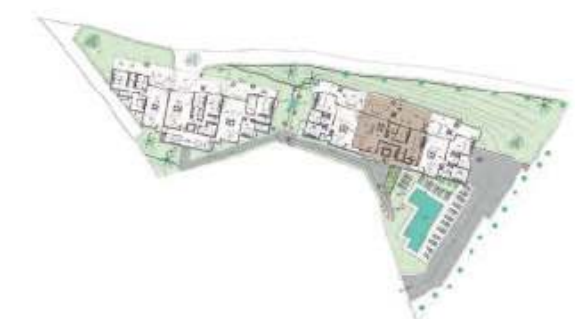
VASARI APARTMENTS

USEFUL AREAS

HALL	1,32 M ²
KITCHEN-LIVING ROOM	48,38 M ²
BEDROOM 1	17,08 M ²
BEDROOM 2	12,49 M ²
CORRIDOR	3,06 M ²
BATHROOM 1	8,46 M ²
BATHROOM 2	4,41 M ²
DRESSING ROOM	5,84 M ²
COVERED TERRACE	44,91 M ²

SUMMARY OF SURFACES

USEFUL INTERIOR SURFACE AREA	101,58 M ²
USEFUL EXTERIOR SURFACE AREA	44,91 M ²
TOTAL USEFUL AREA	146,49 M ²
INTERIOR CONSTRUCTED SURFACE AREA	116,08 M ²
OUTDOOR CONSTRUCTED SURFACE AREA	56,85 M ²
TOTAL BUILT-UP AREA	172,93 M²

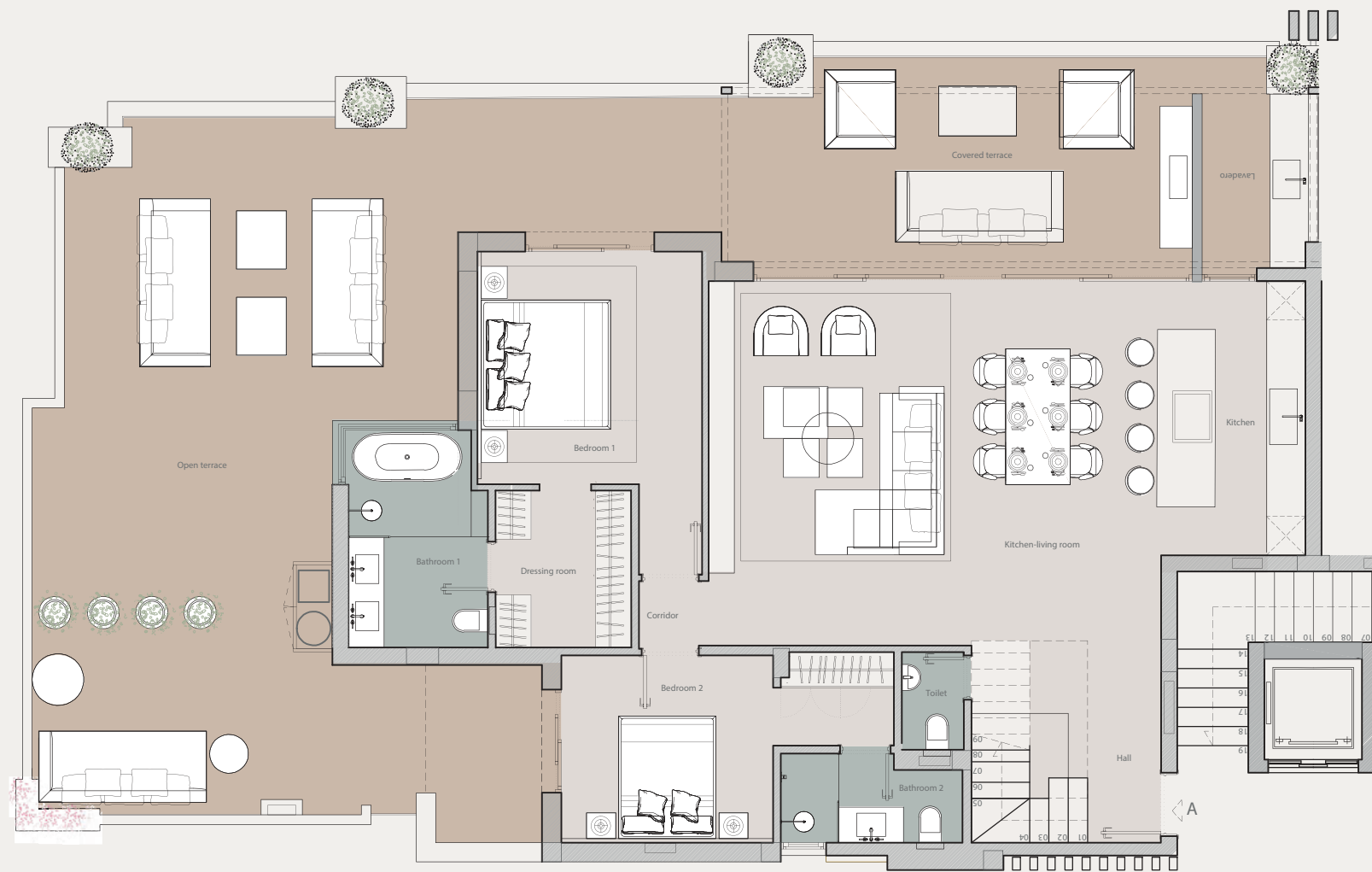




BLOQ 1 (PALM TREE) | DUPLEX PREMIUM PENTHOUSE A

Aloha Forest

VASARI APARTMENTS



FLOOR 1 | 2

USEFUL AREAS - MAIN LEVEL

HALL	6,75 M ²
KITCHEN-LIVING ROOM	49,04 M ²
BEDROOM 1	13,9 M ²
BEDROOM 2	13,11 M ²
CORRIDOR	1,11 M ²
TOILET	1,35 M ²
BATHROOM 1	7,07 M ²
BATHROOM 2	3,68 M ²
DRESSING ROOM	5,11 M ²
LAUNDRY TERRACE	3,95 M ²
COVERED TERRACE	5,87 M ²
OPEN TERRACE	86,74 M ²

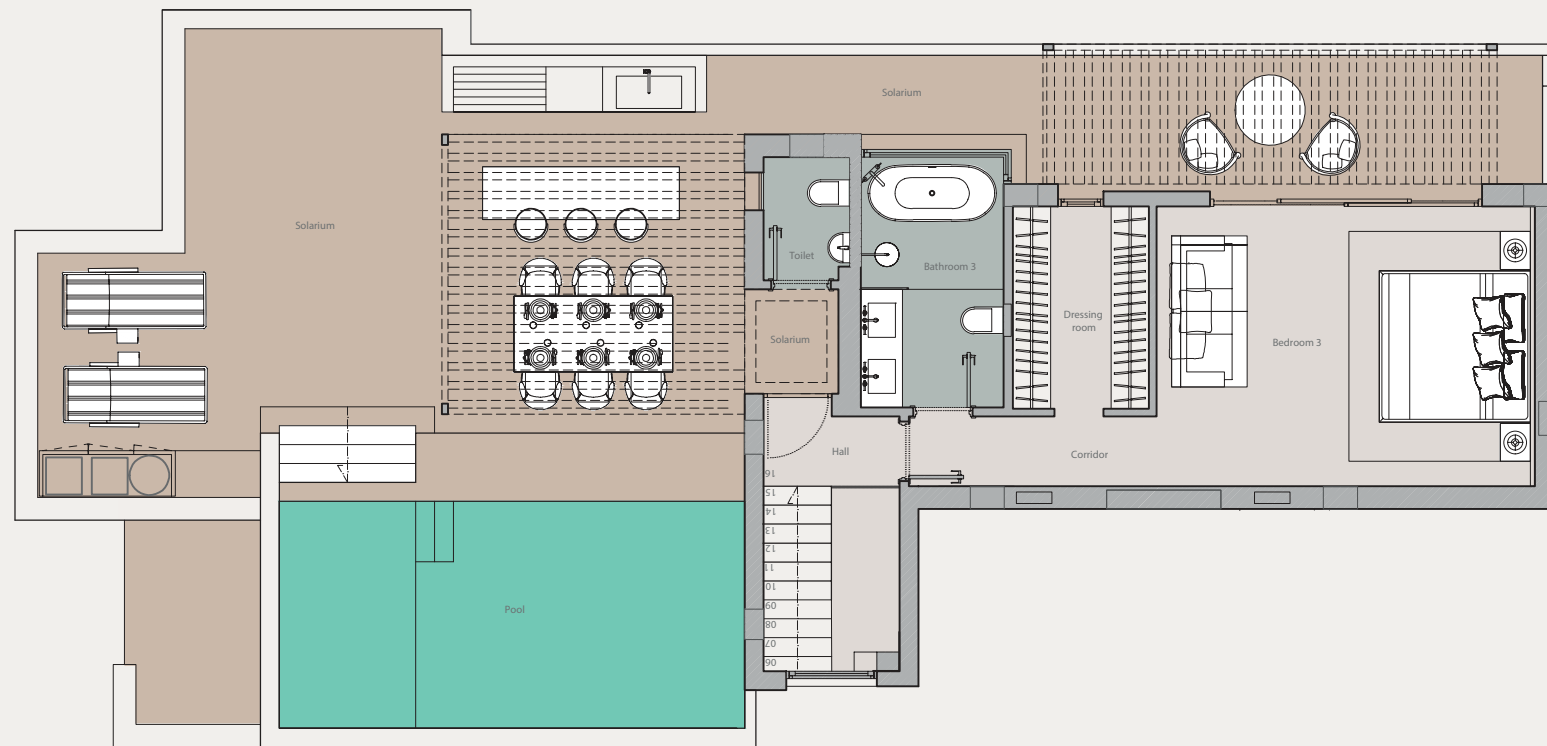




BLOCK 1 (PALM TREE) | DUPLEX PREMIUM PENTHOUSE A

Aloha Forest

VASARI APARTMENTS



SOLARIUM 2 | 2

USEFUL AREAS - UPPER LEVEL

HALL	1,89 M ²
BEDROOM 3	18,52 M ²
CORRIDOR	3,14 M ²
TOILET	1,44 M ²
BATHROOM 3	6,24 M ²
DRESSING ROOM	4,81 M ²
SOLARIUM	69,63 M ²
POOL	16,64 M ²

SUMMARY OF SURFACES

USEFUL INTERIOR SURFACE AREA	137,16 M ²
USEFUL EXTERIOR SURFACE AREA	152,51 M ²
TOTAL USEFUL AREA	319,99 M ²

INTERIOR CONSTRUCTED SURFACE AREA	167,48 M ²
OUTDOOR CONSTRUCTED SURFACE AREA	202,20 M ²

TOTAL BUILT-UP AREA 339,36 M²



QUALITY SPECIFICATIONS



STRUCTURE & FOUNDATIONS

- Reinforced concrete foundation and reticular slab, ceramic brick partitions, travertine marble facade, and flat roof with insulation.



FACADE & ROOFING

- Flat roof with modified bitumen waterproofing and polystyrene insulation.
- Facade in perforated ceramic brick with polyurethane insulation and travertine marble cladding.



FLOORING & STAIRS

- Large-format 90x90 cm natural Palancar stone flooring.
- Staircases in mitred Palancar stone with embedded laminated glass railings.



BATHROOMS

- Palancar stone finishes, custom sinks, designer shower trays, freestanding tub, Villeroy & Boch sanitaryware, Fantini taps.



CARPENTRY

- Interior: Off-white oak doors, built-in wardrobes, custom LED-lit dressing room, reticular slab, and ceramic brick partitions.
- Exterior: Iroko wood smart entrance door and Cortizo aluminum windows with thermal break and double glazing.



INSTALLATIONS

- Plumbing with multilayer piping and Polo Kal soundproof system.
- Hot water by DAIKIN aérothermal system (180–230 L tanks).
- Underfloor heating and ducted air conditioning with smart thermostats.
- Full electrical installation with LED lighting, internet/TV points, and Wi-Fi video intercom.



KITCHENS

- Fully furnished designer kitchens with lacquered cabinets, porcelain countertops, islands, and Miele appliances.



SWIMMING POOL & OUTDOOR AREAS

- Pool with natural stone edge, salt system, LED lighting, jacuzzi area, Mediterranean landscaping, perimeter fencing.



EXTRAS

- Outdoor gas brazier, Sonos sound system, Apple Home automation, remote electronic lock, Wi-Fi, CCTV and concierge service.

*THESE QUALITIES MAY BE MODIFIED BY THE SUPERVISING ARCHITECT IN CHARGE OF THE WORKS AND REPLACED WITH OTHER SIMILAR ONES.



af



BECOME AN OWNER AT ALOHA FOREST

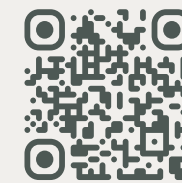
MAKE YOUR APPOINTMENT



GRUPO VASARI

Urb. La Alzambra s/n, CN Vasari
Marbella, 29660, Málaga

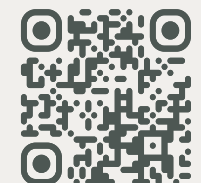
+34 951 319 731
info@grupovasari.com
grupovasari.com



ALOHA FOREST

Urb. Los Pinos de Aloha
s/n Marbella, 29660, Málaga

+34 609 540 924
info@alohaforest.es
alohaforest.es





af